

<Heat Resistant Test Result of EK-400 and EK-900 Writing Line >

2003/2/3

Condition : Write down on the stainless board and put in the test machine for one hour.

EK-400										EK-900	
	White	Black	Red	Blue	Green	Yellow	Pink	Purple	Gold	Silver	
100°C	◎	◎	◎	◎	◎	◎	◎	◎	◎	◎	
	No color fading	No color fading	No color fading	No color fading	No color fading	No color fading	No color fading	No color fading	No color fading	No color fading	
150°C	◎	◎	◎	◎	◎	◎	◎	◎	◎	◎	
	No color fading	No color fading	No color fading	No color fading	No color fading	No color fading	No color fading	No color fading	No color fading	No color fading	
200°C	◎	◎	◎	◎	◎	◎	◎	◎	x	◎	
	No color fading	No color fading	No color fading	No color fading	No color fading	No color fading	No color fading	No color fading	Color fading	No color fading	
300°C	x	x	x	x	x	x	x	x	x	Δ	
	Color fading	Color fading	Color fading	Color fading	Color fading	Color fading	Color fading	Color fading	Color fading	Slight decreasing enamel	

Conclusion : (EK-400) Every color fades the color in the condition of between 200°C and 300°C but the character is legible.

(EK-900) Gold fades the color, loses enamel, moreover the character is illegible between 150°C and 200°C.

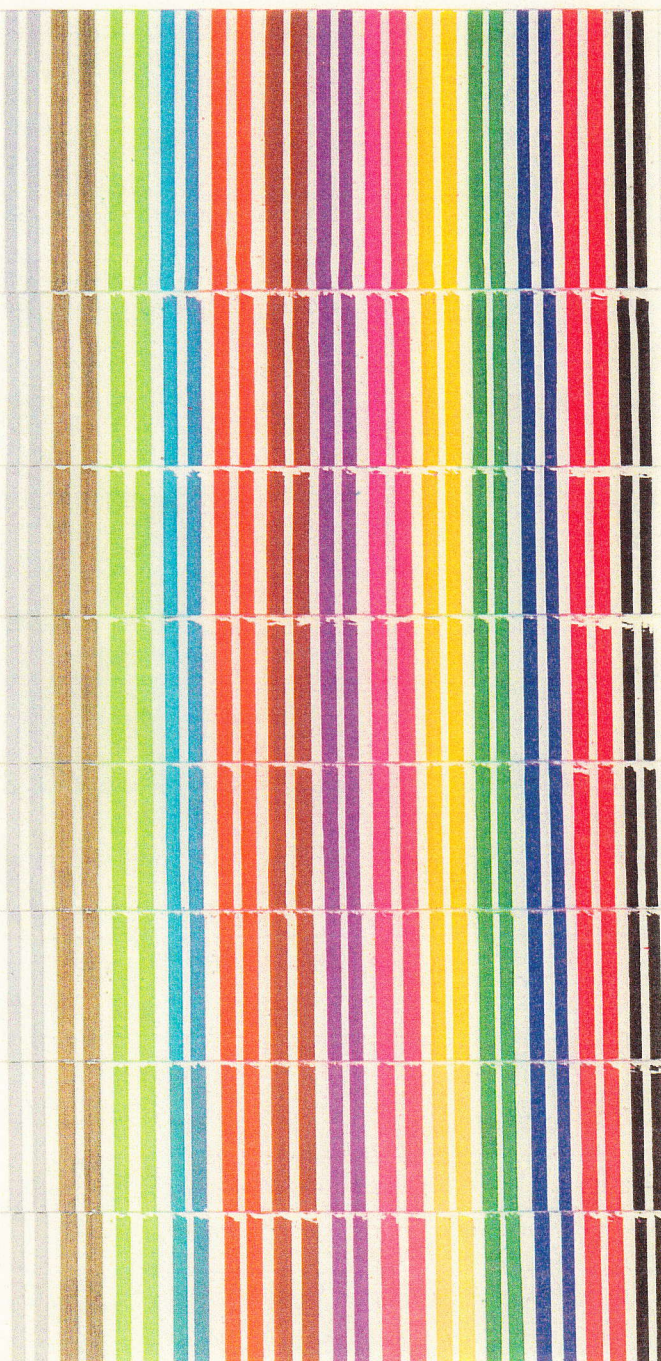
Silver doesn't fade the color, but decreases enamel slightly.

No. _____

試 験 表

品 名 Artline EK-400/900XF light resistance

担 当



START

10HR

20HR

30HR

50HR

100HR

200HR

300HR

No. _____

試 験 表

品 名 Other Manufacturer Z PAINT MARKER light resistance

担 当



START

10HR

20HR

30HR

50HR

100HR

200HR

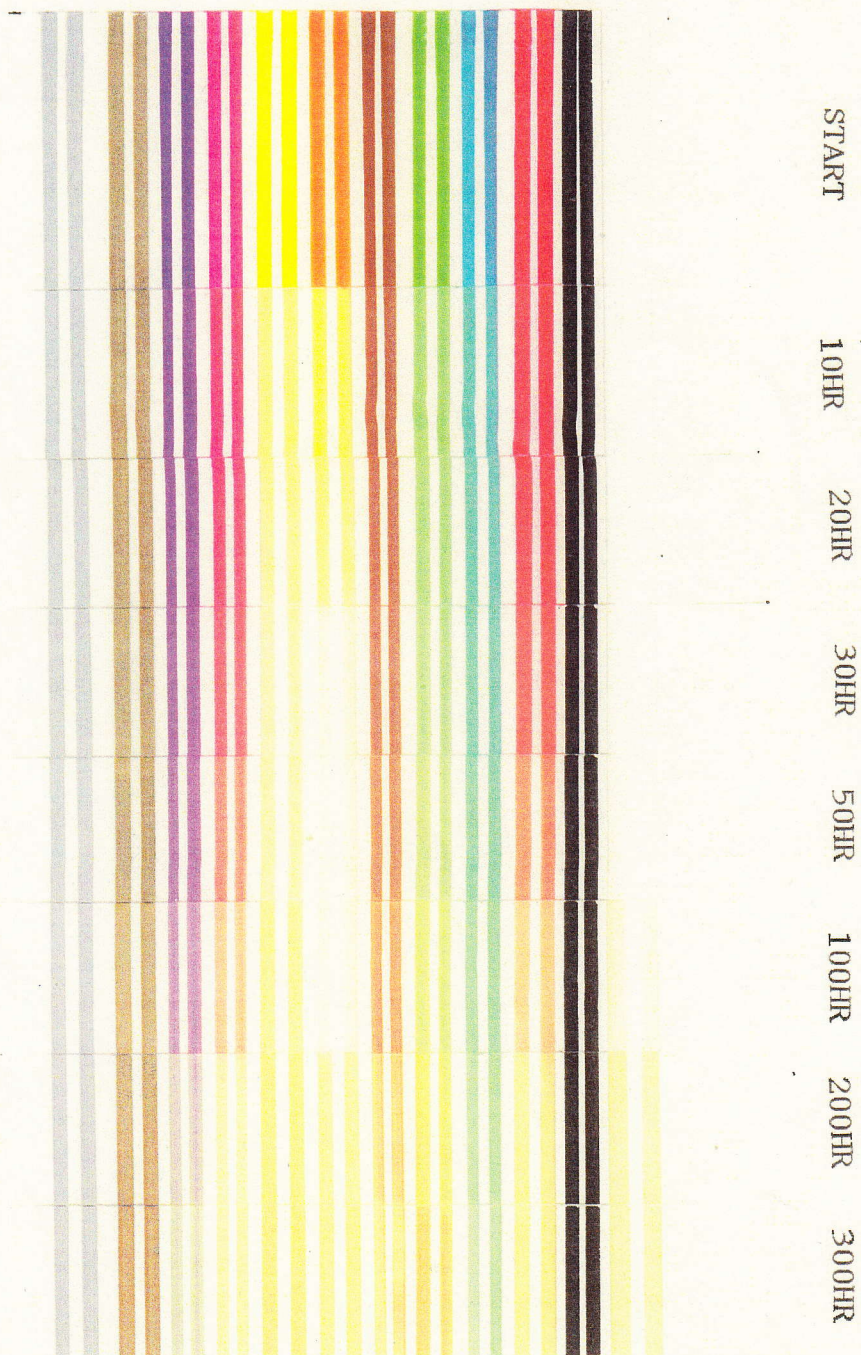
300HR

No. _____

試 験 表

品 名 Other Manufacturer P PAINT MARKER light resistance

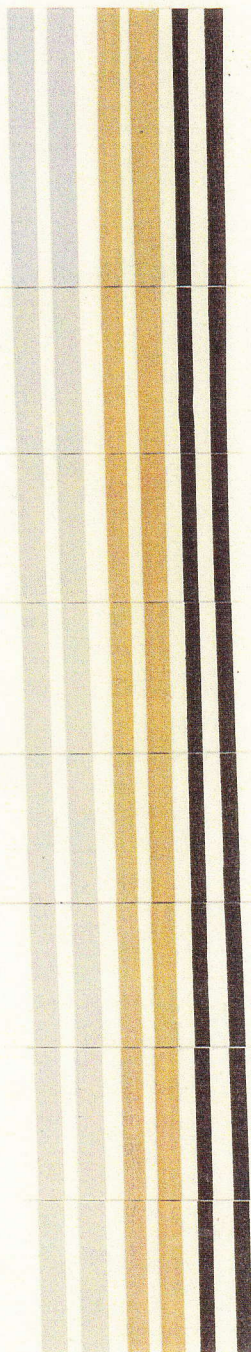
担 当 上田 寛章



No. _____ 試 験 表

品 名 Other Manufacturer PE PAINT MARKER light resistance

担 当 上田 寛章



START

10HR

20HR

30HR

50HR

100HR

200HR

300HR